

The Beef on Cattle Farms

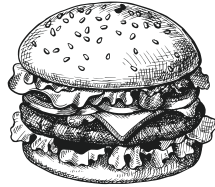
What does a Cow Eat and Drink? - Color or circle the pictures of things that a cow can eat and drink to be healthy.



CORN



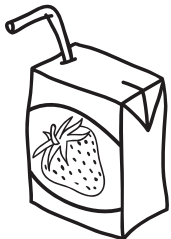
GRASS



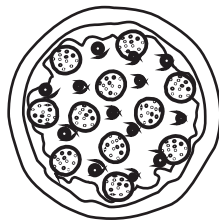
HAMBURGER



CARROTS



JUICE



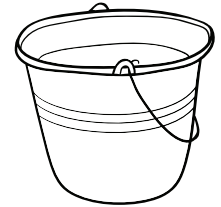
PIZZA



CACTUS

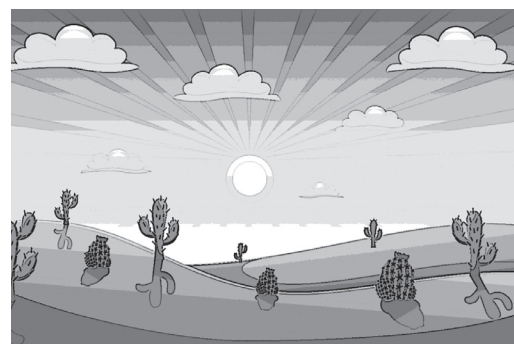
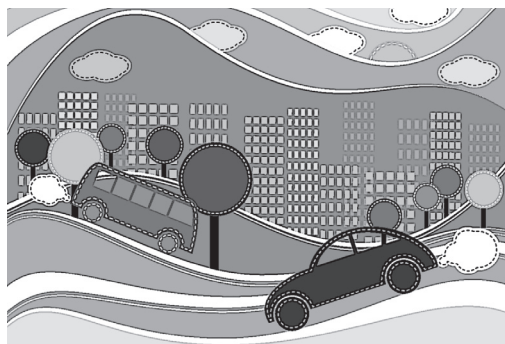
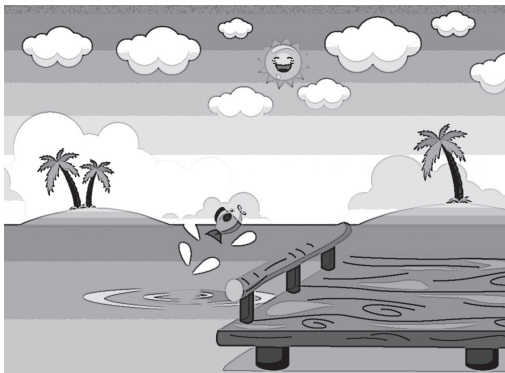


HAY



WATER

Where does a Cow Live? - Place an X on the places that a cow does not live. Why not?





Field Trip #5 - PRIMARY ACTIVITY

The Beef on Cattle Farms

Form to Function - Follow the directions below to decide what body parts help a cow be a cow.

Color the body part yellow that helps a cow eat food.

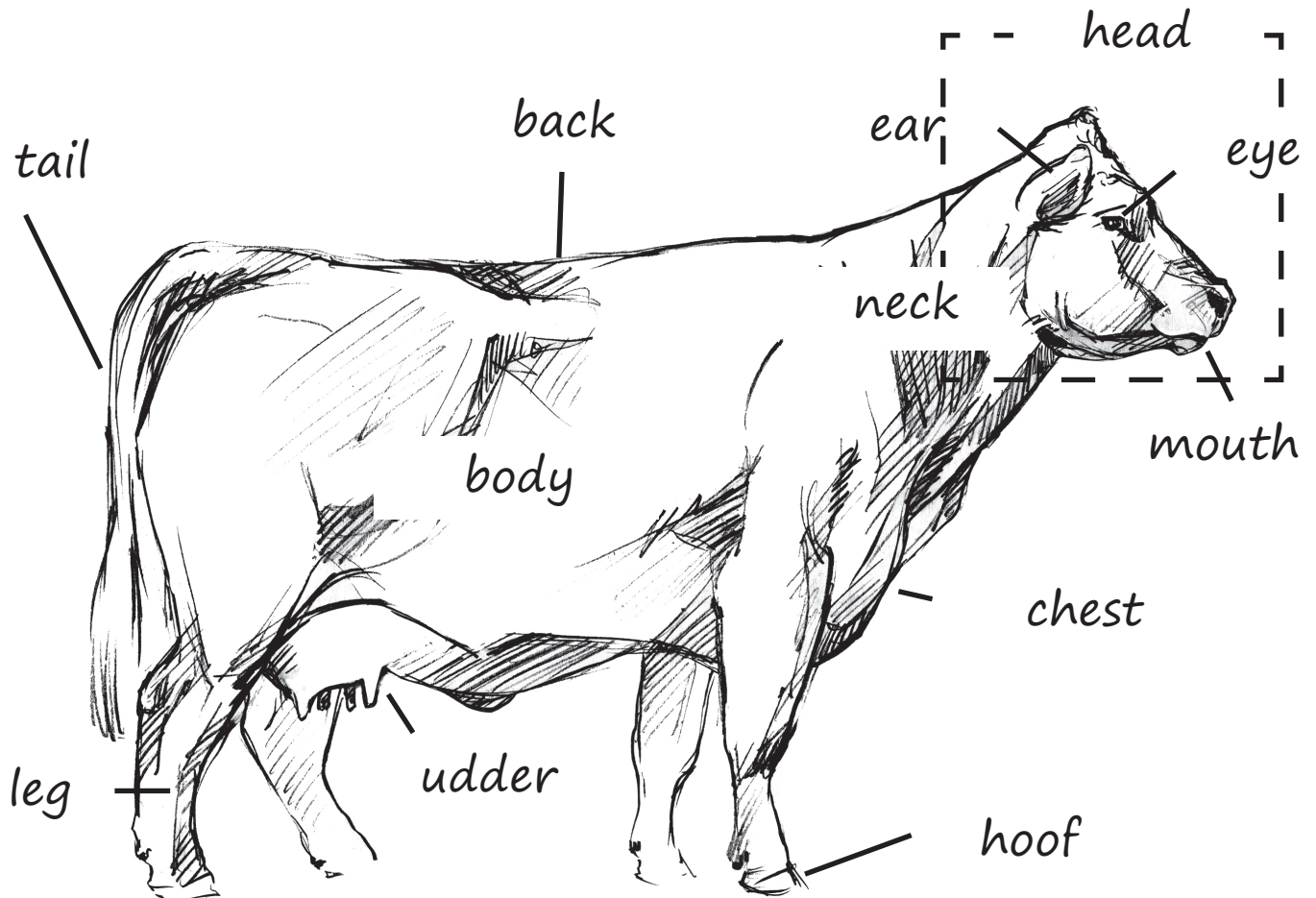
Color the body part green that helps a cow get rid of flies.

Color the body part pink that makes milk for calves to drink.

Color the body parts blue that help a cow sense danger.

Color the body parts brown that help a cow move to find food.

Circle the parts that a cow uses to defend herself from danger.

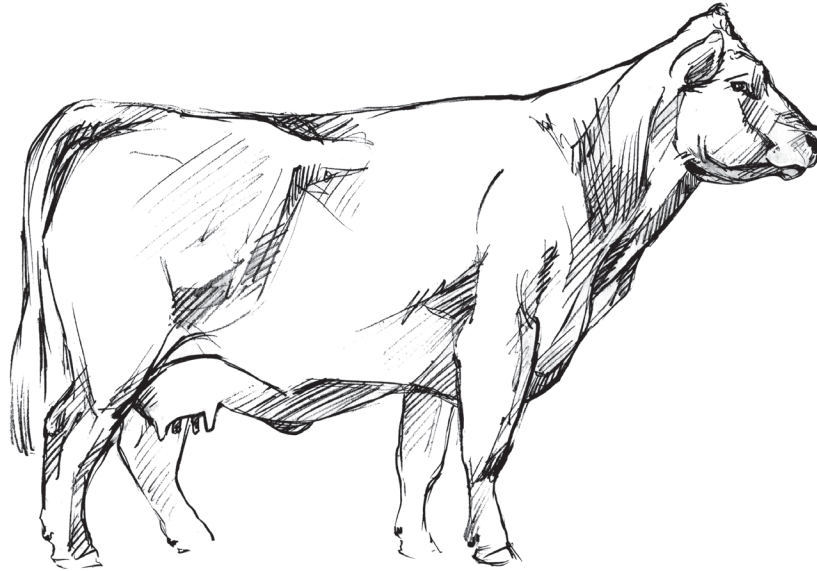




Field Trip #5 - GRADE 2 ACTIVITY

The Beef on Cattle Farms

How is a Cow a Cow? - Decide which of the different labels on the left identify a cow by circling the answer. Then draw a line to the best statement on the left that explains why.



- | | |
|----------------------------|---------------------------------------|
| 1. LIVING or NON-LIVING | a. A cow must eat food for energy. |
| 2. PLANT or ANIMAL | b. A cow produces milk for its young. |
| 3. BACKBONE or NO-BACKBONE | c. A cow breathes air and moves. |
| 4. BIRD, MAMMAL or REPTILE | d. A cow has a skeleton. |

Writing Assignment: Pick your favorite animal and write 3 sentences that compares that animal to a cow.

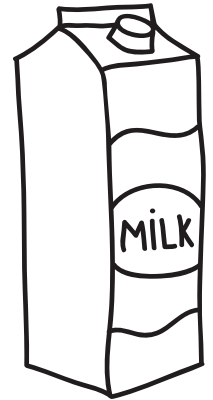
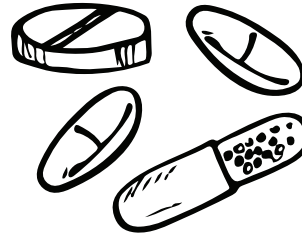
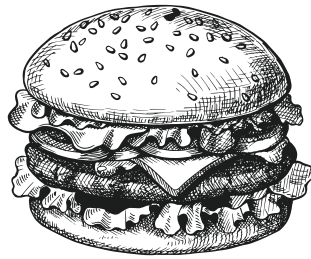
1. How is your animal similar to a cow? _____

2. How is your animal different than a cow? _____

3. Could your animal and a cow live in the same place? Why or why not? _____

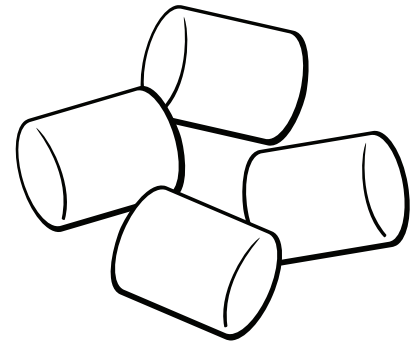
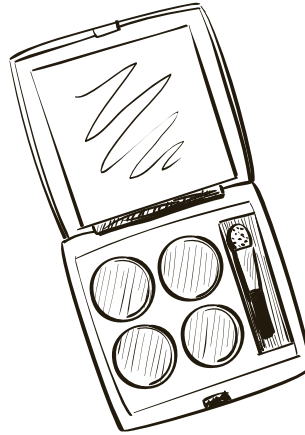
The Beef on Cattle Farms

Watch the video and **CIRCLE** or **COLOR** all the items we make with ingredients from cows. Then color the rest of the items. They all have cow ingredients! **OPTIONAL:** Write these items in alphabetical order on another sheet of paper.



HAMBURGER

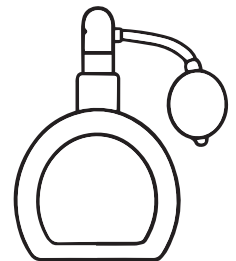
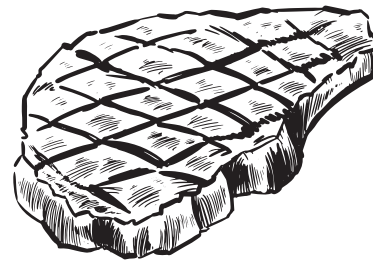
MEDICINES



LEATHER BOOTS

FACE MAKEUP

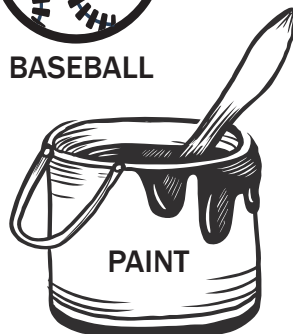
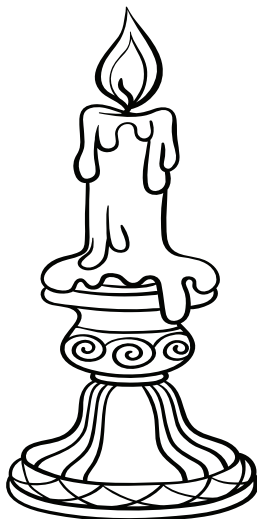
MARSHMALLOWS



BEEF STEAK

PERFUME

BASEBALL



CANDLES

PAINT

SOFT CANDIES