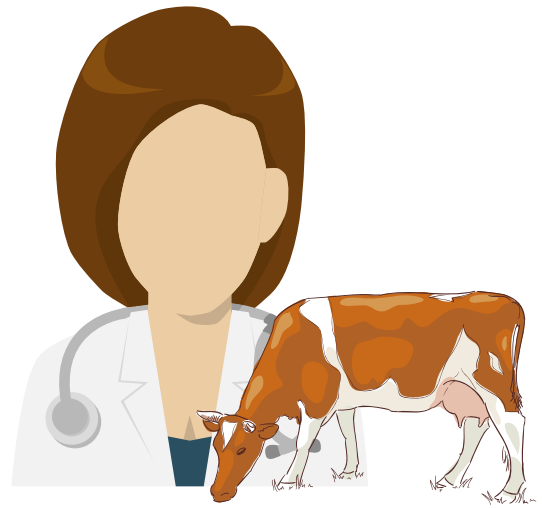
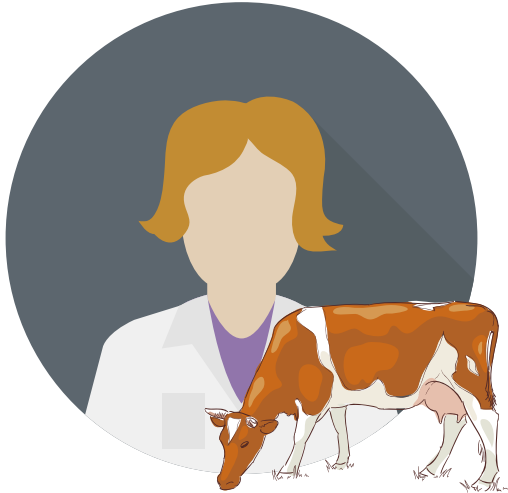




**FARMER**



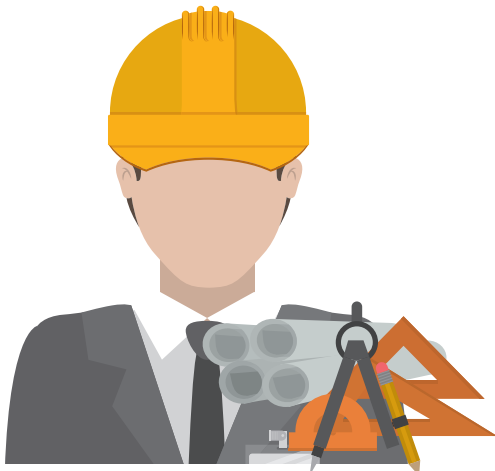
**VETERINARIAN**



**ANIMAL NUTRITIONIST**



**PLANT SCIENTIST**



**ENGINEER**



**CONSTRUCTION WORKER**



**ELECTRICIAN**



**PLUMBER**



**TRUCK DRIVER**



**MILK PLANT MANAGER**



**FOOD SCIENTIST**



**CONSUMER**

This person milks the cows and makes sure they have what they need to be healthy, such as food, water, and shelter. This person also makes sure the milking equipment stays clean and the milk is stored in a cool tank before it goes to the processing plant. (a)

This person is called when cows are sick, hurt, or need help having a calf. They also give cows vaccinations and medicine when the cows need it. Cows on medicine are removed from the milking herd so the milk stays safe. (b)

This person makes sure the cows have high quality feed, vitamins, and minerals to make healthy milk. This person may work at a feed mill for many farmers in a community or may look at the crops that a farmer grows on their farm. (c)

This person works with the farmer to keep the grass pastures and crops healthy and free of pests so the cows have healthy feed.

(d)

This person designs the equipment and controls needed to make the farmers' and milk processors' jobs easier, while keeping the milk safe to drink. This person looks at a problem and designs a solution.

(e)

This person builds the barns, milking parlors, and the milk plants that are needed to care for the cows and collect and process the milk.

(f)

This person makes sure the farm has electricity to run the milk collecting and storage equipment. The milk plant also needs electricity to process and package the milk. Milk must be kept cold to prevent bacteria growth.

(g)

This person is required for many jobs along the milk making process. When transporting milk, they must make sure it stays cold. They also transport supplies needed for producing and processing milk.

(i)

This person makes sure every thing and every one at the processing plant works. He or she also makes sure all the rules at the plant are being followed to keep milk safe to drink. If plant workers are not keeping clean—hand washing, keeping hair and clothing covered—or if contaminants are found in the milk, the entire tank is thrown away.

(k)

This person makes sure the farm has access to water for the cows and to clean the milk parlor. Water is used to clean the equipment at the milk plant as well.

(h)

This person finds ways to make and keep milk safer to drink. They test the milk regularly and study how to keep germs (bacteria and fungus) from growing in milk. Pasteurization—heating the milk to a high temperature then cooling it quickly—is one of the most important ways milk is processed for safety. (j)

This person buys the milk to drink. Once milk leaves the grocery store, he or she must continue to keep the milk cold and never pour milk back into its original container. (l)